

2017-18

JAZZ BAND AUDITION PACKET

GENERAL INFO

Mason's jazz band consists of 2 alto saxes, 2 tenor saxes, 1 bari sax, 4 trombones, 4 trumpets, piano, bass, and drums. Students with two years of experience playing their instrument are encouraged to try out.

The group meets in the band room before school three days a week, Tuesday through Thursday from 7:10 a.m. to 8:00 a.m. We perform at evening concerts, community events, and at jazz festivals/competitions.

Please audition only if you are willing to commit to attending all rehearsals and performances; They are mandatory. You must purchase an ASB sticker to participate.

AUDITION DATES

Piano, bass, drums Tuesday, Sept. 19
Saxophones Wednesday, Sept. 20
Trumpets & trombones Thursday, Sept. 21
all auditions held from 7:30 a.m. to 8:00 a.m.

REHEARSAL START DATES

Rhythm section only September 26-28
Full band rehearsals beginOctober 3
all rehearsals start at 7:10 a.m. Arrive earlier to set up.

AUDITION MATERIALS

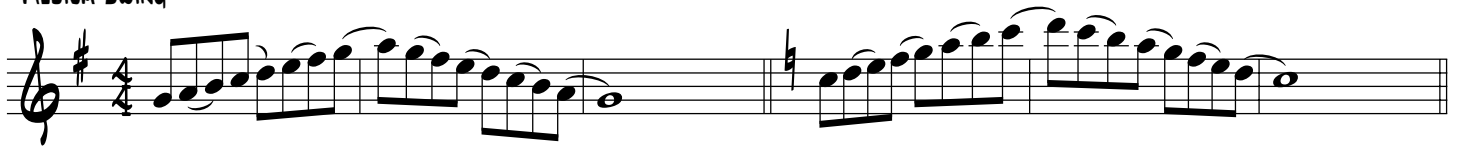
The following pages contain audition material for all instruments.
Print (and practice) the page intended for your instrument.

Alto and Baritone Saxophone..... 2
Tenor Saxophone 3
Trumpet 4
Trombone 5
Piano 6
Bass 7
Drums 8

JAZZ AUDITION MATERIAL

E♭ ALTO/BARI SAX

MEDIUM SWING



MEDIUM SWING



MEDIUM SWING



JAZZ AUDITION MATERIAL

B♭ TENOR SAX

MEDIUM SWING

Four staves of music for B♭ Tenor Sax, Medium Swing. The first two staves are in 4/4 time and feature a melodic line with eighth-note patterns. The third and fourth staves continue the melody with various chromatic alterations and accidentals.

MEDIUM SWING

A single staff of music in 4/4 time, featuring a continuous eighth-note melodic line.

MEDIUM SWING

Three staves of music in 4/4 time. The first staff is marked with an E minor 7 chord (E_{min}7). The second staff is marked with an F minor 7 chord (F_{min}7). The third staff is marked with an E minor 7 chord (E_{min}7).

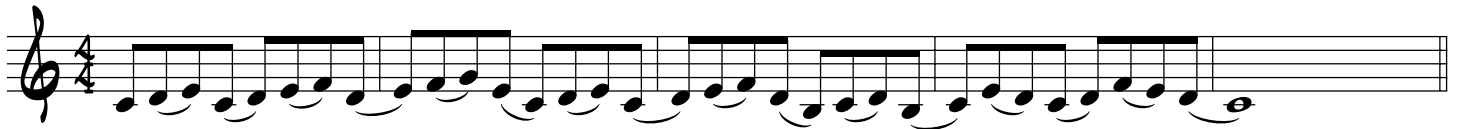
JAZZ AUDITION MATERIAL

B♭ TRUMPET

MEDIUM SWING



MEDIUM SWING



MEDIUM SWING



JAZZ AUDITION MATERIAL

TROMBONE

MEDIUM SWING



MEDIUM SWING



MEDIUM SWING



JAZZ AUDITION MATERIAL

PIANO/MALLETS

SWING

Musical notation for piano/mallets, Swing tempo. It consists of three staves of music. The first two staves are in 4/4 time with a key signature of two flats (Bb, Eb). The first staff has a treble clef and a 4/4 time signature. The second staff has a treble clef and a 4/4 time signature. The third staff has a treble clef and a 4/4 time signature. The music features eighth and sixteenth note patterns with some rests.

SWING DMIN7

Musical notation for piano/mallets, Swing tempo. It consists of two staves of music. The first staff has a treble clef and a 4/4 time signature. The second staff has a treble clef and a 4/4 time signature. The music features eighth and sixteenth note patterns with some rests.

EbMIN7

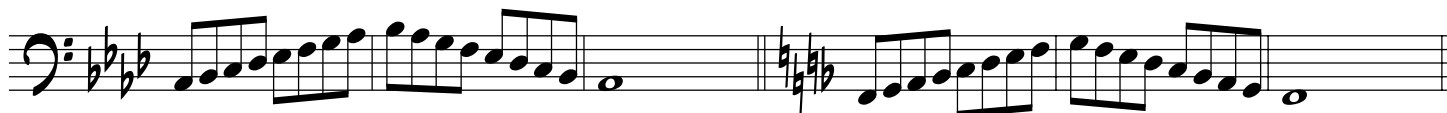
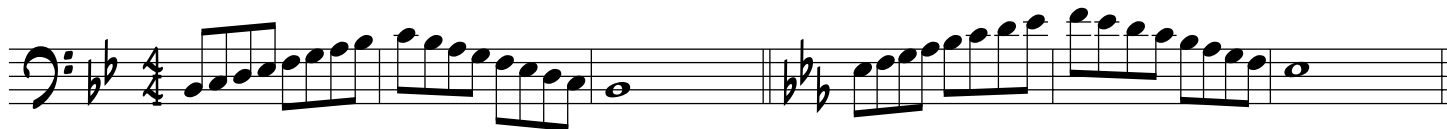
Musical notation for piano/mallets, Swing tempo. It consists of two staves of music. The first staff has a treble clef and a 4/4 time signature. The second staff has a treble clef and a 4/4 time signature. The music features eighth and sixteenth note patterns with some rests.

DMIN7

Musical notation for piano/mallets, Swing tempo. It consists of two staves of music. The first staff has a treble clef and a 4/4 time signature. The second staff has a treble clef and a 4/4 time signature. The music features eighth and sixteenth note patterns with some rests.

JAZZ AUDITION MATERIAL

BASS



JAZZ AUDITION MATERIAL

DRUMS

LATIN GROOVE RIDE CYM. S.D. HI-HAT S.D.

CLAVE

BOSSA NOVA

SWING #1

SWING #2

SWING #3

SWING #4

SWING #5

ROCK H.H. CLOSED + (OPEN H.H.)

The image displays ten sets of drum notation, each consisting of two staves. The top staff of each set represents the snare drum (S.D.) and the bottom staff represents the hi-hat (H.H.). The styles are: 1. Latin Groove: Snare has a steady eighth-note pattern; hi-hat has a steady eighth-note pattern with occasional accents. 2. Clave: Snare has a steady eighth-note pattern; hi-hat has a steady eighth-note pattern with occasional accents. 3. Bossa Nova: Snare has a steady eighth-note pattern; hi-hat has a steady eighth-note pattern with occasional accents. 4. Swing #1: Snare has a steady eighth-note pattern; hi-hat has a steady eighth-note pattern with occasional accents. 5. Swing #2: Snare has a steady eighth-note pattern; hi-hat has a steady eighth-note pattern with occasional accents. 6. Swing #3: Snare has a steady eighth-note pattern; hi-hat has a steady eighth-note pattern with occasional accents. 7. Swing #4: Snare has a steady eighth-note pattern; hi-hat has a steady eighth-note pattern with occasional accents. 8. Swing #5: Snare has a steady eighth-note pattern; hi-hat has a steady eighth-note pattern with occasional accents. 9. Rock: Snare has a steady eighth-note pattern; hi-hat has a steady eighth-note pattern with occasional accents. The notation includes various rhythmic values such as eighth notes, quarter notes, and half notes, as well as rests and accents.