

# 2016-17

# JAZZ BAND AUDITION PACKET

## GENERAL INFO

Mason's jazz band consists of 2 alto saxes, 2 tenor saxes, 1 bari sax, 4 trombones, 4 trumpets, piano, bass, and drums. Students with two years of experience playing their instrument are encouraged to try out.

The group meets in the band room before school three days a week, Tuesday through Thursday from 7:10 a.m. to 8:00 a.m. We perform at evening concerts, community events, and at jazz festivals/competitions.

Please audition only if you are willing to commit to attending all rehearsals and performances; They are mandatory. You must purchase an ASB sticker to participate.

## AUDITION DATES

Piano, bass, drums ..... Tuesday, Sept. 20  
Saxophones ..... Wednesday, Sept. 21  
Trumpets & trombones ..... Thursday, Sept. 22  
*all auditions held from 7:30 a.m. to 8:00 a.m.*

## REHEARSAL START DATES

Rhythm section only ..... September 27-29  
Full band rehearsals begin ..... October 4  
*all rehearsals begin at 7:10 a.m. Arrive earlier to set up.*

## AUDITION MATERIALS

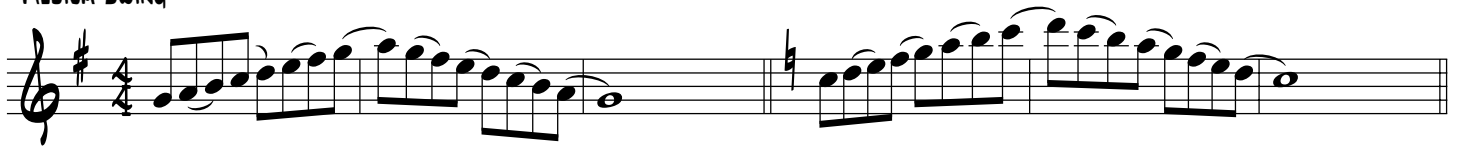
The following pages contain audition material for all instruments.  
Print (and practice) the page intended for your instrument.

Alto and Baritone Saxophone ..... 2  
Tenor Saxophone ..... 3  
Trumpet ..... 4  
Trombone ..... 5  
Piano ..... 6  
Bass ..... 7  
Drums ..... 8

# JAZZ AUDITION MATERIAL

E♭ ALTO/BARI SAX

MEDIUM SWING



MEDIUM SWING



MEDIUM SWING



# JAZZ AUDITION MATERIAL

## B♭ TENOR SAX

### MEDIUM SWING

Two systems of musical notation for a B♭ Tenor Sax. The first system consists of two staves. The first staff is in 4/4 time, starting with a treble clef and a key signature of one flat (B♭). It contains a melodic line with eighth-note patterns and slurs. The second staff is in the same key signature but changes to a key signature of two sharps (D major) for the second half of the system. The second system also consists of two staves. The first staff is in D major, and the second staff is in a key signature of one flat (B♭), with various accidentals (sharps and flats) throughout the line.

### MEDIUM SWING

A single staff of musical notation in 4/4 time, starting with a treble clef and a key signature of one flat (B♭). The line consists of a continuous eighth-note pattern with slurs, ending with a whole note.

### MEDIUM SWING

Three staves of musical notation in 4/4 time, starting with a treble clef and a key signature of two sharps (D major). The first staff begins with a chord symbol **E<sub>MIN</sub>7** above the first measure. The second staff begins with a chord symbol **F<sub>MIN</sub>7** above the first measure. The third staff begins with a chord symbol **E<sub>MIN</sub>7** above the first measure. The notation includes eighth-note patterns, slurs, and a repeat sign at the end of each staff.

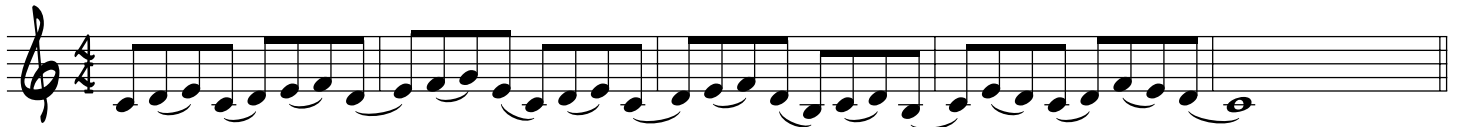
# JAZZ AUDITION MATERIAL

## B♭ TRUMPET

### MEDIUM SWING



### MEDIUM SWING



### MEDIUM SWING



# JAZZ AUDITION MATERIAL

## TROMBONE

### MEDIUM SWING

First staff of music for Trombone, Medium Swing. It begins with a bass clef, a key signature of two flats (B-flat and E-flat), and a 4/4 time signature. The melody consists of eighth-note runs and quarter notes, with a repeat sign at the end.

Second staff of music for Trombone, Medium Swing. It continues the melody from the first staff, featuring similar eighth-note patterns and quarter notes, ending with a repeat sign.

Third staff of music for Trombone, Medium Swing. This staff features a more complex melodic line with various accidentals, including sharps and flats, and a mix of eighth and quarter notes.

### MEDIUM SWING

Fourth staff of music for Trombone, Medium Swing. It features a continuous eighth-note pattern throughout the staff, maintaining the two-flat key signature and 4/4 time signature.

### MEDIUM SWING

Fifth staff of music for Trombone, Medium Swing. It begins with a double bar line and a repeat sign. Above the staff is the chord symbol  $D_{MIN7}$ . The melody consists of quarter and eighth notes.

Sixth staff of music for Trombone, Medium Swing. It begins with a double bar line and a repeat sign. Above the staff is the chord symbol  $E_{bMIN7}$ . The melody consists of quarter and eighth notes.

Seventh staff of music for Trombone, Medium Swing. It begins with a double bar line and a repeat sign. Above the staff is the chord symbol  $D_{MIN7}$ . The melody consists of quarter and eighth notes.

# JAZZ AUDITION MATERIAL

## PIANO/MALLETS

SWING

Musical notation for piano/mallets, Swing style. It consists of three staves of music. The first staff is in 4/4 time with a key signature of two flats (Bb, Eb). The second staff is in 4/4 time with a key signature of three flats (Bb, Eb, Ab). The third staff is in 4/4 time with a key signature of one flat (Bb). The music features eighth and sixteenth note patterns.

SWING DMIN7

Musical notation for piano/mallets, Swing style. It consists of two staves of music. The first staff is in 4/4 time with a key signature of one flat (Bb). The second staff is in 4/4 time with a key signature of one flat (Bb). The music features eighth and sixteenth note patterns.

EbMIN7

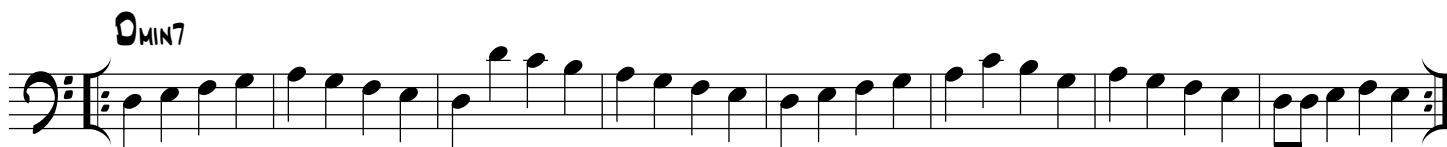
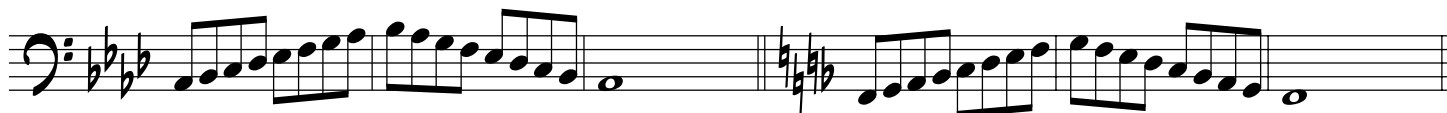
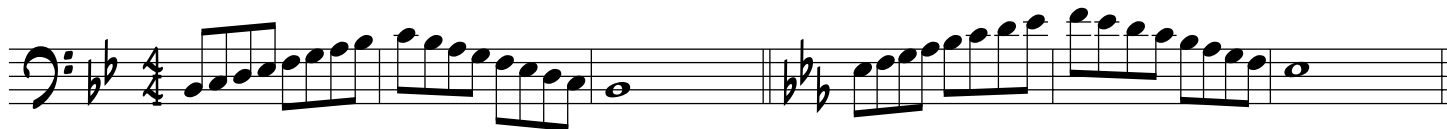
Musical notation for piano/mallets, Swing style. It consists of two staves of music. The first staff is in 4/4 time with a key signature of three flats (Bb, Eb, Ab). The second staff is in 4/4 time with a key signature of three flats (Bb, Eb, Ab). The music features eighth and sixteenth note patterns.

DMIN7

Musical notation for piano/mallets, Swing style. It consists of two staves of music. The first staff is in 4/4 time with a key signature of one flat (Bb). The second staff is in 4/4 time with a key signature of one flat (Bb). The music features eighth and sixteenth note patterns.

# JAZZ AUDITION MATERIAL

## BASS



# JAZZ AUDITION MATERIAL

## DRUMS

**LATIN GROOVE** RIDE CYM. S.D. HI-HAT S.D.

**CLAVE**

**BOSSA NOVA**

**SWING #1**

**SWING #2**

**SWING #3**

**SWING #4**

**SWING #5**

**ROCK** H.H. CLOSED + (OPEN H.H.)

The image displays ten staves of drum notation, each representing a different jazz style. Each staff consists of two five-line staves. The top staff of each pair is for the snare drum, and the bottom staff is for the bass drum. The notation includes various rhythmic patterns, rests, and specific drum techniques indicated by text labels. The styles are: Latin Groove (with Ride Cym., S.D., and Hi-Hat S.D. labels), Clave, Bossa Nova, Swing #1, Swing #2, Swing #3, Swing #4, Swing #5, and Rock (with H.H. Closed and Open H.H. labels). The notation uses 'x' marks for cymbals and 'o' marks for hi-hats, with stems and flags indicating the timing and dynamics of the beats.